

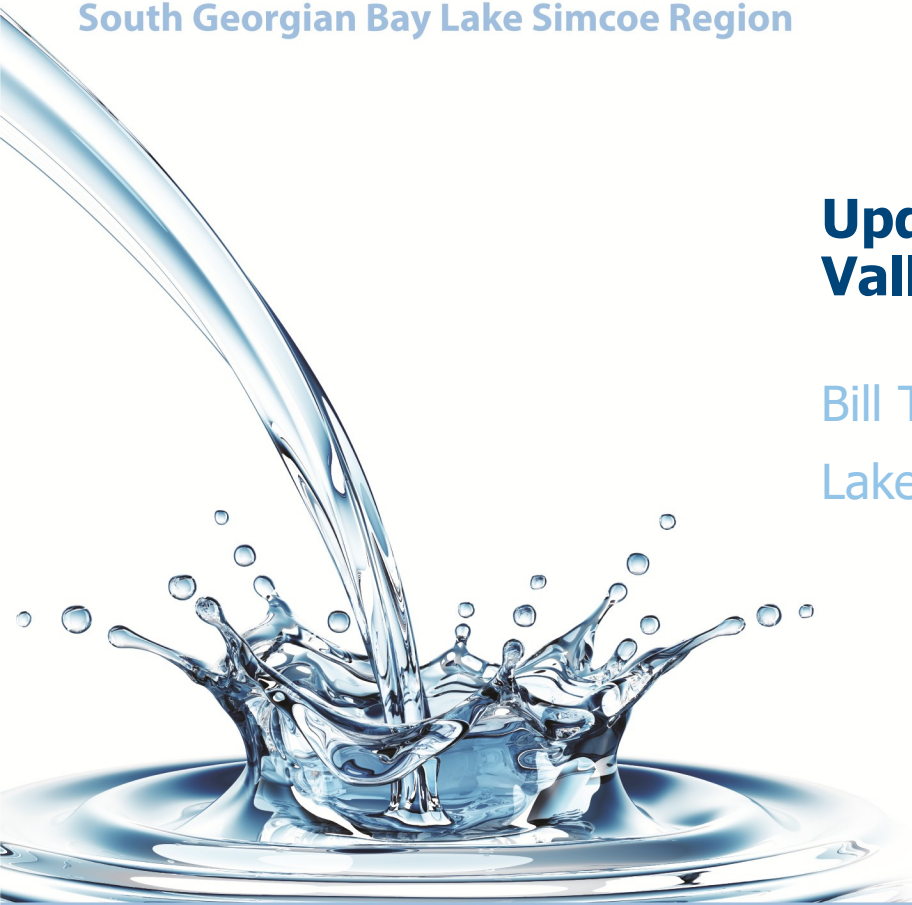
Source Water Protection

South Georgian Bay Lake Simcoe Region

Update on Nitrate at the Midhurst Valley Drinking Water System

Bill Thompson

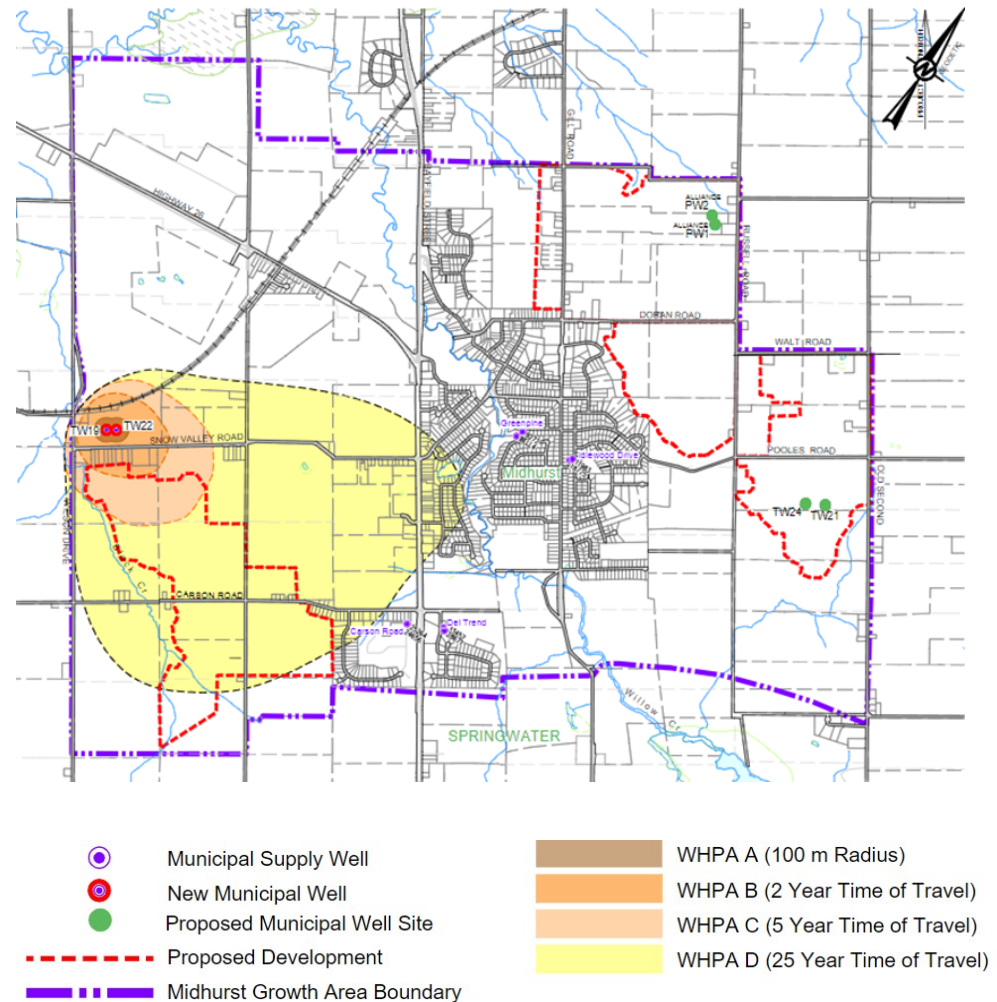
Lake Simcoe Region Conservation Authority



Water
is **life.**
Protect
Yours.

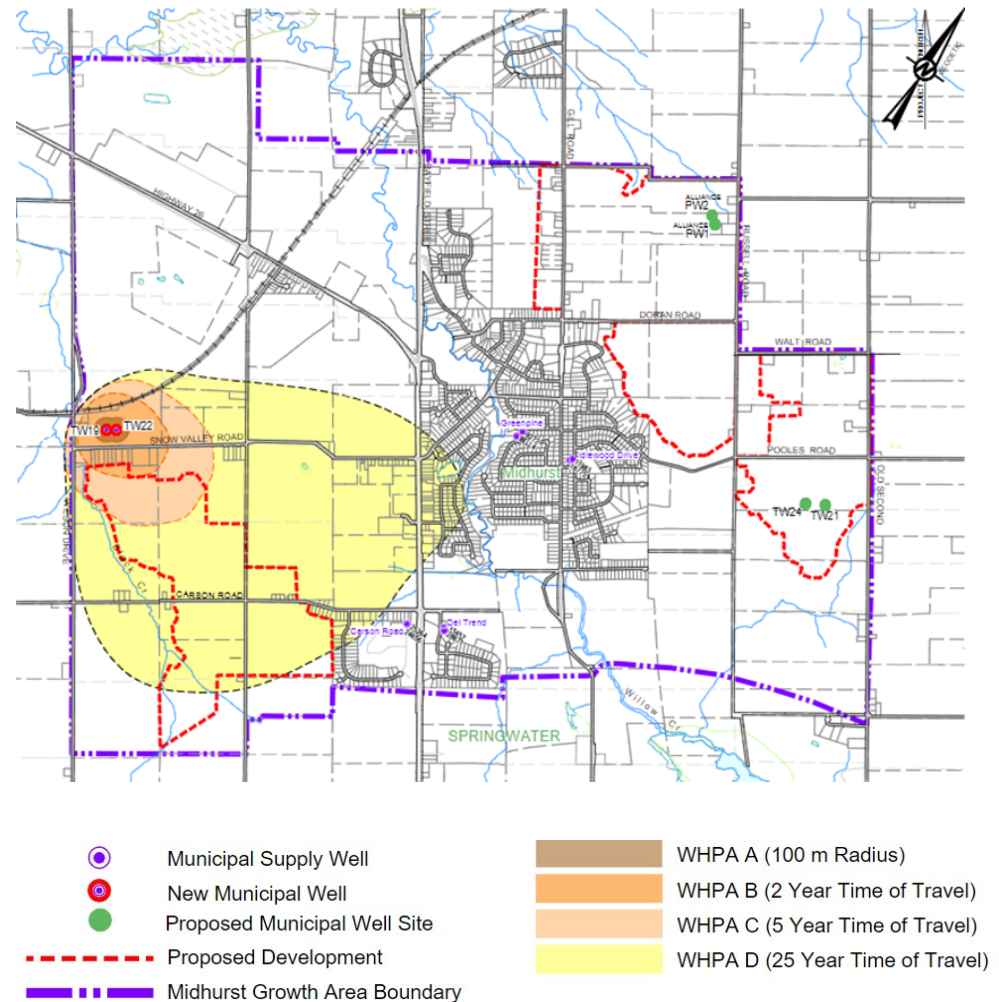
Background

- New wellfield referred to as the Midhurst Valley Wellfield.
- Water supply source is groundwater.
- Was integrated into the Assessment Report, Township of Springwater Chapter in 2022
- Came into service in 2024

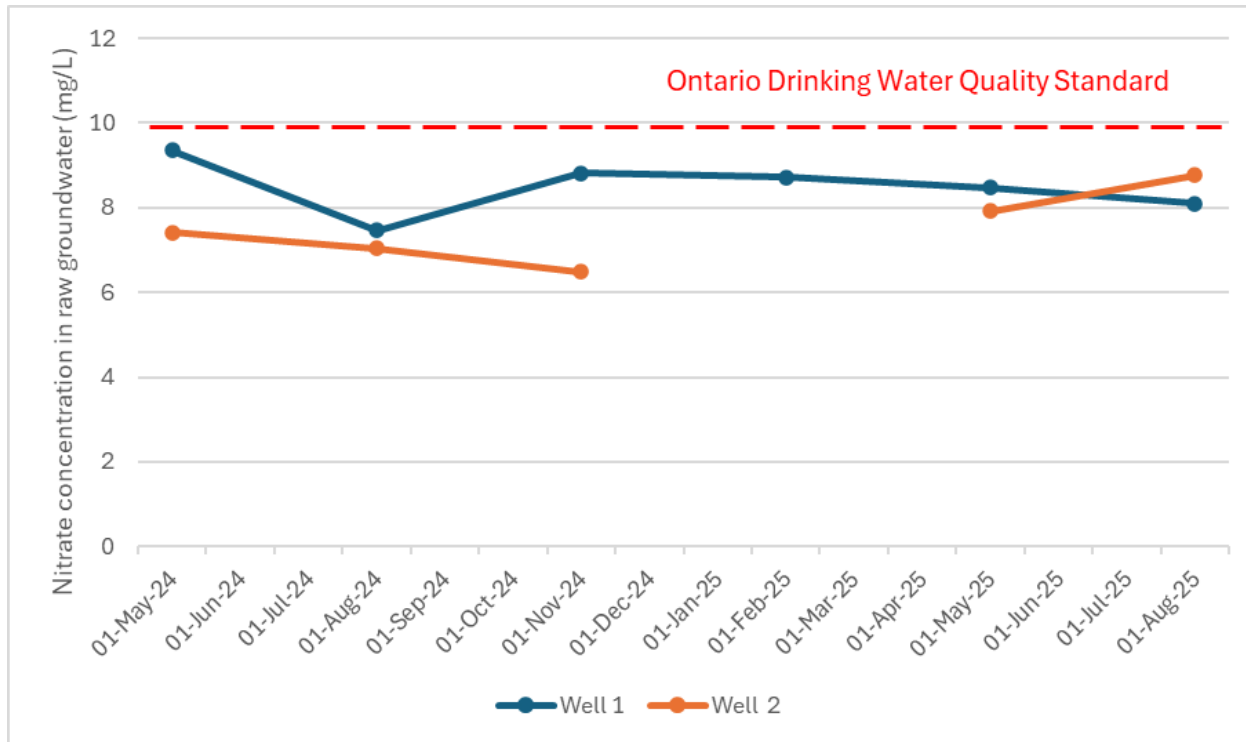


Background

- Nitrate concentrations were elevated, but below the Standard
- Nitrate was assumed to be due to historic source, agricultural
- Was assumed that nitrate would decrease as development proceeded



Recent nitrate status

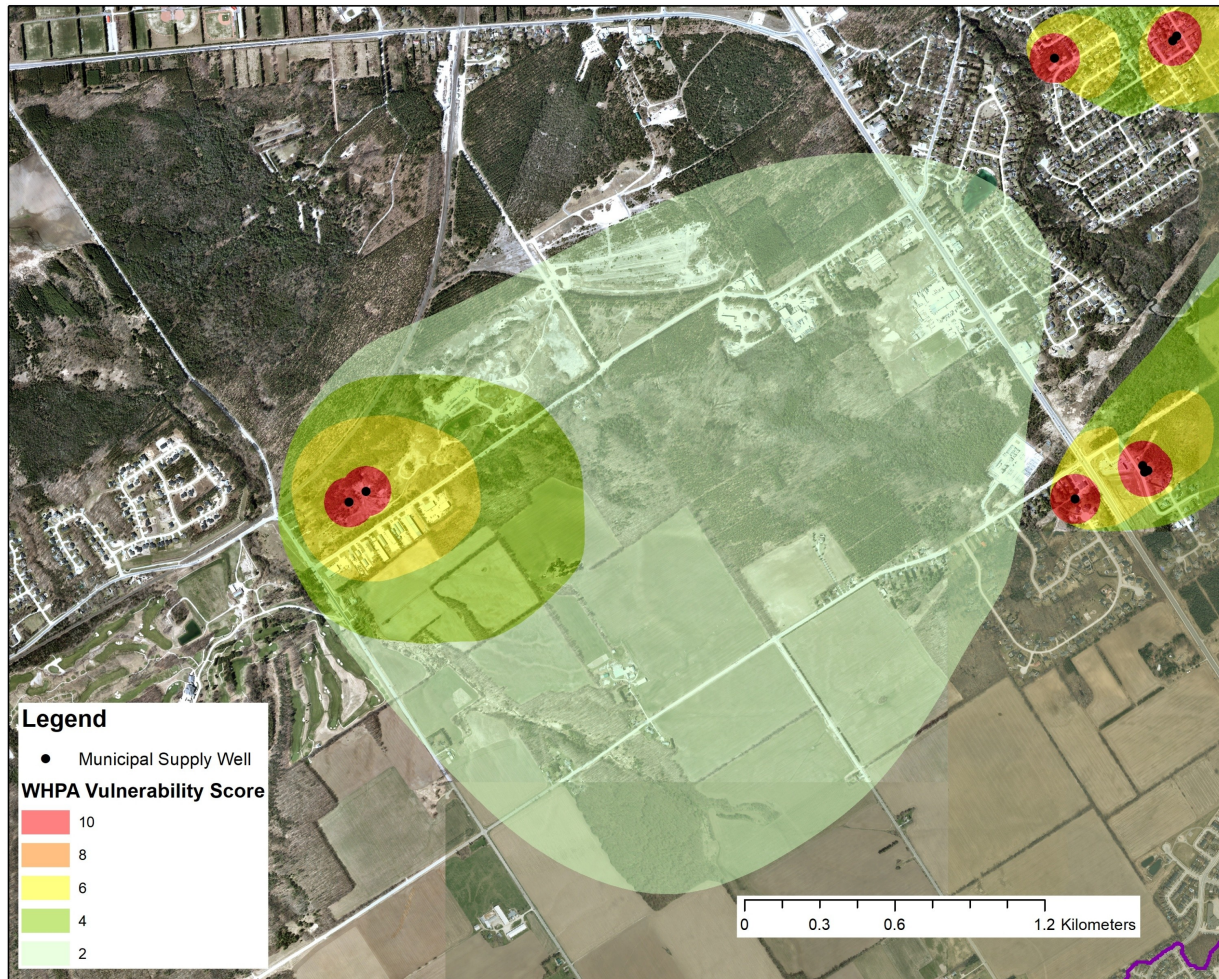


- Remains below standard
- Well 1 stable to decreasing
- Well 2 variable

What is an 'Issue'?

- A drinking water Issue exists if:
 - A contaminant in a well exceeds the Ontario Drinking Water Quality Standard; or,
 - It is increasing such that it is projected to exceed the Standard
- If an Issue is identified
 - An Issue Contributing Area (ICA) needs to be identified
 - All low and moderate threats are to be addressed through policy

Midhurst Valley vulnerable areas



Water *is* life. Protect Yours.

Summary

- Nitrate remains elevated, but below the Standard
- Not clear if nitrate concentrations are increasing or not
- If concentrations increase, an Issue may be necessary
- SPA staff will continue to monitor

Thank you

Water
is life.
Protect
Yours.



Water *is life.* **Protect** *Yours.*