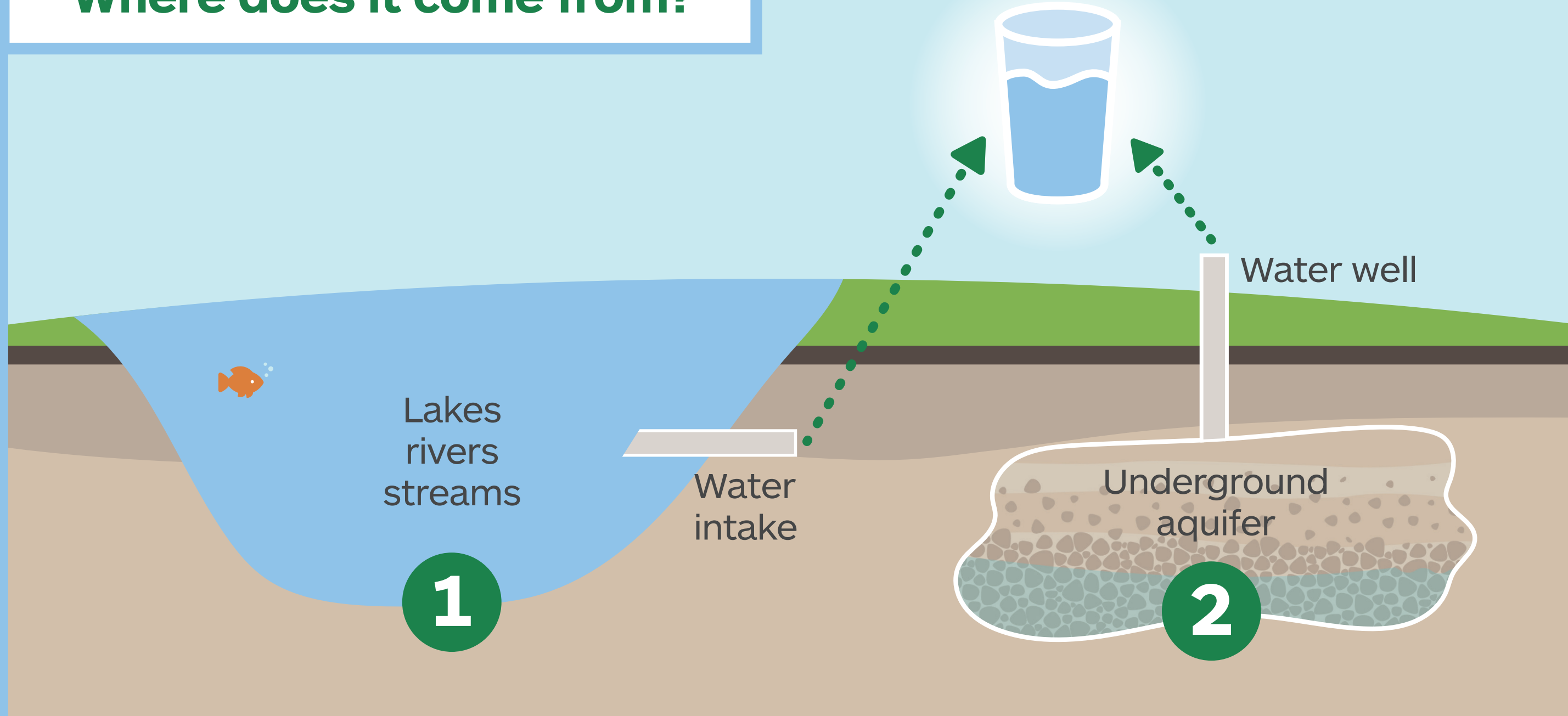
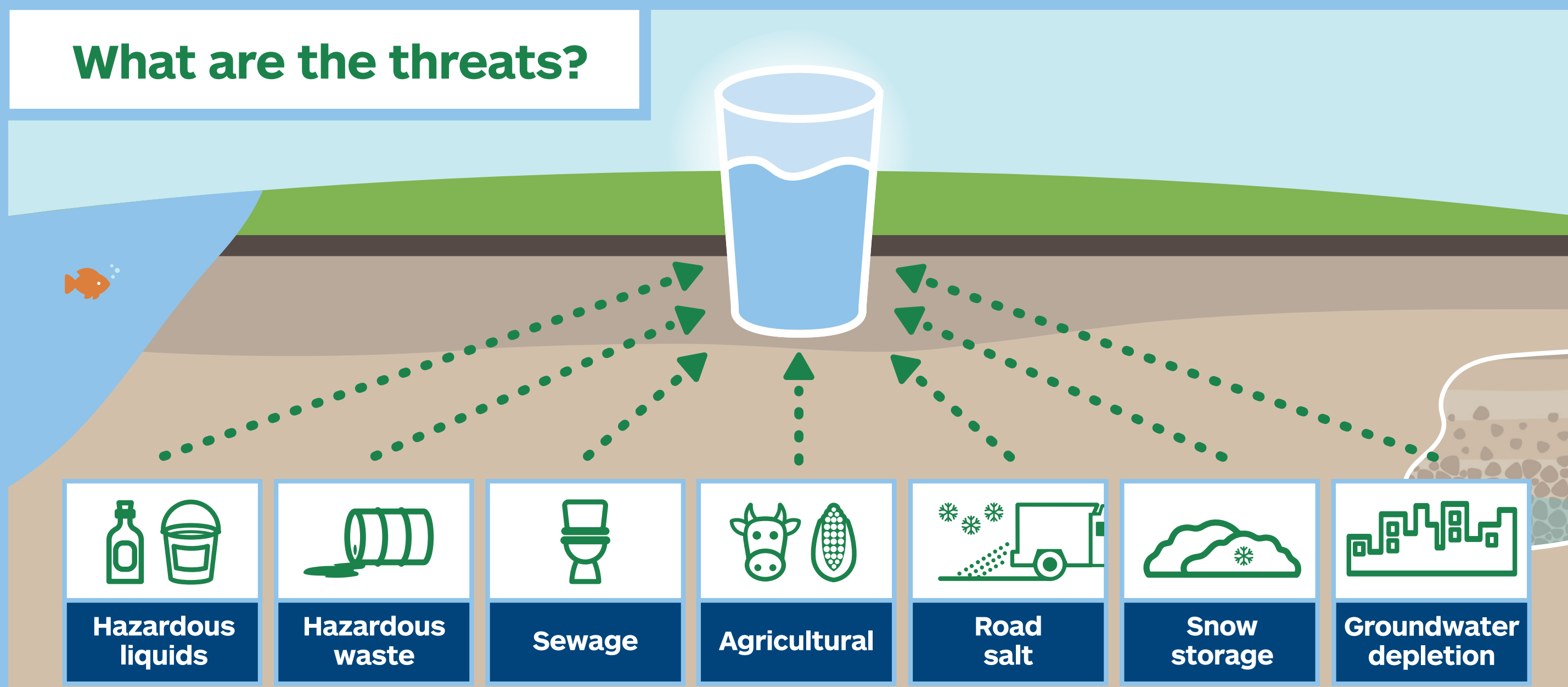


YOUR Water

Where does it come from?



What are the threats?



Threats: a breakdown

	Improperly used or stored hazardous liquids.
Hazardous liquids	
	Improperly stored or disposed of hazardous waste.
Hazardous waste	
	Improperly maintained septic systems.
Sewage	
	Improperly used or stored nutrients, fertilizers, pesticides or animal waste.
Agricultural	
	Excessive use of winter salt.
Road salt	
	Runoff from large piles of snow (such as in parking lots).
Snow storage	
	Activities that prevent rain or snow from entering the ground and replenishing underground water sources.
Groundwater depletion	

Threat + vulnerable area =

potential risk

Vulnerable areas are located near municipal water wells or surface water intakes that bring water from lakes and rivers into treatment plants.

When a home or business is located in a “vulnerable area”, the activities on that property play an even greater role in ensuring the protection of municipal drinking water supplies. That’s because contaminants can have a greater, more immediate impact on municipal drinking water.

To find out if a particular property is in one of these zones, visit ourwatershed.ca

DRINKING WATER
SOURCE PROTECTION
SOUTH GEORGIAN BAY LAKE SIMCOE REGION

For more information about drinking water and how to protect it, visit ourwatershed.ca

Water
is life.
Protect Yours.