

CHAPTER 1: INTRODUCTION

TABLE OF CONTENTS

| | | |
|------------|---|-----------|
| 1 | INTRODUCTION | 3 |
| 1.1 | Drinking Water Source Protection and the <i>Clean Water Act, 2006</i>..... | 3 |
| 1.2 | The Source Water Protection Process | 4 |
| 1.2.1 | The First Stage | 4 |
| 1.2.2 | The Second Stage | 5 |
| 1.2.3 | The Third and Fourth Stages..... | 7 |
| 1.3 | The South Georgian Bay-Lake Simcoe Source Protection Region | 7 |
| 1.4 | Participants In The Process | 8 |
| 1.4.1 | Source Protection Authorities (SPA)..... | 8 |
| 1.4.2 | Source Protection Committee (SPC) | 8 |
| 1.4.3 | Municipalities | 10 |
| 1.4.4 | First Nations | 12 |
| 1.4.5 | Consultants..... | 12 |
| 1.4.6 | Peer Reviewers | 13 |
| 1.4.7 | Public..... | 13 |
| 1.5 | Purpose and Scope of This Report | 13 |
| 1.6 | How This Report Is Organized | 15 |
| 1.7 | Information Gaps and Continuous Improvement..... | 17 |

List of Tables

| | |
|--|----|
| Table 1-1: SGBLS Region Source Protection Timeline..... | 4 |
| Table 1-2: Members of the SGBLS Source Protection Committee..... | 9 |
| Table 1-3: Municipalities within the South Georgina Bay-Lake Simcoe Source Protection Region, and the Source Protection Areas they are within. Highlighted column indicates those municipalities within this Assessment Report. | 10 |
| Table 1-4: Number of Drinking Water Systems, Wells and Surface Water Intakes in the SGBLS Region..... | 15 |

List of Figures

| | |
|---|----|
| Figure 1-1: Source Water Protection Areas and Regions..... | 18 |
| Figure 1-2: Source Water Protection Areas and Municipalities | 19 |
| Figure 1-3: Summary of the organization of the Black-Severn River Assessment Report | 20 |

1 INTRODUCTION

1.1 DRINKING WATER SOURCE PROTECTION AND THE *CLEAN WATER ACT, 2006*

“The first barrier to the contamination of drinking water involves protecting the sources of drinking water. I recommend that the Province adopt a watershed-based planning process, led by the Ministry of the Environment and by the Conservation Authorities (where appropriate), and involving local actors. The purpose is to develop a source protection plan for each watershed in the province...”

- Justice Dennis O'Connor, The Walkerton Inquiry, 2002

The *Clean Water Act, 2006* (CWA) received Royal Assent on October 19, 2006 and was proclaimed into effect on July 3, 2007. The CWA introduced a new level of protection – Source Water Protection – for the Province’s drinking water resources that will help communities across Ontario enjoy a safe and plentiful supply of clean drinking water for generations to come.

The catalyst for the CWA was the Walkerton tragedy of May 2000, when the town’s water system became contaminated with deadly bacteria, primarily *Escherichia coli* O157:H7.1 (*E. coli*). Seven people died, and more than 2,300 became ill. The government of Ontario responded by calling an Inquiry – The Walkerton Commission of Inquiry. The inquiry and its reports were divided into two parts. The first pertains only to the events in Walkerton, and focuses on the circumstances that caused the outbreak including the systemic errors and oversights which led to the outbreak. The second goes beyond the events in Walkerton, and looks into other matters necessary to ensure the safety of Ontario’s drinking water. Justice Dennis O’Connor set out the concept of the multi-barrier approach to safe drinking water, emphasizing the protection of source water supplies in Ontario’s lakes, rivers and aquifers. This is the first barrier in safe drinking water. Source protection is followed by the other components of the multi-barrier approach: effective water treatment, secure distribution systems, monitoring programs, and response to adverse test results. Our drinking water is among the safest in the world and conventional water treatment can remove many potential contaminants that can result in illness and even death. Source Protection, however, is about identifying possible threats to drinking water, assessing the risks of those threats, mitigating them and planning ahead to prevent contamination before it gets into our water supply. It is a responsible and effective way of ensuring safe, clean drinking water and avoiding serious health issues.

By passing the *Clean Water Act* in 2006, and implementing Justice O’Connor’s recommendations on Source Water Protection, the government made a commitment to

the citizens of Ontario to safeguard drinking water by protecting its quality and quantity so that a tragedy such as Walkerton will not happen again. Locally, the South Georgian Bay–Lake Simcoe (SGBLS) Source Protection Committee has been working with partners, stakeholders and residents to fulfill the requirements of the CWA.

1.2 THE SOURCE WATER PROTECTION PROCESS

The Source Water Protection process, as established within the CWA and resulting regulations, is a four stage process (Table 1-1). The information that needs to be included in the Assessment Report, and how it will be assessed, is prescribed within the Technical Rules (MOE, 2008a) in addition to the CWA and associated regulations. Once a draft Assessment Report has been completed it is required to undergo two periods of public consultation before being submitted to the Province. Following the completion of the Assessment Report, Source Protection Plans will be developed and implemented in the following years.

Table 1-1: SGBLS Region Source Protection Timeline.

| Source Protection Process Time | | | |
|--|---|---|--|
| Year 1 (2008-09) | Year 1-2 (2009-10) | Year 3-5 (2010-12) | Year 5+ (2012+) |
| Stage 1 | Stage 2 | Stage 3 | Stage 4 |
| Laying the foundation Establish source protection authorities Establish source protection committees Negotiate terms of reference | Assessment of threats Identify and assess threats to drinking water Prepare Assessment Report | Source Protection Planning Prepare source protection plan, including policies to address significant threats to drinking water | Implementation Implement the source protection plan Inspect and enforce Monitor and report Review plan |

1.2.1 The First Stage

The first stage of the process, which has been completed, established the Source Protection Areas, Source Protection Authorities and the multi-stakeholder Source Protection Committee - these are all described in more detail below. Once these were

established, the preparation and approval of the Terms of Reference (ToR) for each Source Protection Area was initiated. The Terms of Reference documents are essentially the work plans to be followed, and describe:

1. The technical projects or tasks required to develop an understanding of the Vulnerable Areas and Threats to drinking water sources;
2. The projects or tasks required to develop land use planning policies, risk reduction strategies, and monitoring activities that will be recommended in the Source Protection Plans;
3. The consultation efforts with stakeholders and the public on the development and results of the technical and planning products completed;
4. Whether the tasks from 1, 2 and 3 above will be coordinated by municipalities, Source Protection / Conservation Authority staff, or some combination thereof (a partnership); and finally
5. Cost estimates and timelines for task completion.

The Terms of Reference documents for the South Georgian Bay-Lake Simcoe Region were approved by the Ministry of the Environment on June 29 and July 13, 2009.

1.2.2 The Second Stage

The second and current stage of the process is to prepare and submit an Assessment Report for each Source Protection Area to the Director of the Source Protection Programs Branch within 12 months of the approval of the Terms of Reference. However, due to a number of technical and project management challenges, it was not possible to complete the Assessment Report by the July 13, 2010 submission date. An extension request was submitted to Director of the Source Protection Programs Branch, for an approval for submission on December 17, 2010 granted.

This is the Lakes Simcoe and Couchiching-Black River Assessment Report. It describes both the vulnerability of municipal drinking water systems to quality and quantity stresses, as well as categorizes and lists human activities that could be significant threats to drinking water.

There are four (4) types of Vulnerable Areas considered in the Assessment Report. Two are directly associated with municipal drinking water systems and two are on a regional (landscape) scale and don't pertain directly to any particular drinking water system. The two Vulnerable Areas directly associated with a drinking water system are called Wellhead Protection Areas (WHPA) and Intake Protection Zones (IPZ):

- A WHPA is the area around a wellhead where land use activities have the greatest potential to affect the quality of water that flows into the well.
- Similarly, an IPZ is the area around a surface water intake.

The two regional scale Vulnerable Areas are Significant Groundwater Recharge Areas (SGRAs) and Highly Vulnerable Areas (HVAs):

- Recharge Areas are areas where water enters an aquifer (underground reservoirs from which we draw our water) through the ground. Recharge areas are significant when they supply more water to an aquifer than the land around it. Significant Recharge areas are an important area on the landscape for ensuring a sufficient amount of water enters an aquifer. For example, paving over a SGRA would prevent water from getting into the ground to recharge an aquifer, potentially decreasing the amount of water available.
- Highly Vulnerable Aquifers (HVAs) are those areas where an aquifer may be more prone to contamination. These areas have been identified where there is little or no protection from an overlying aquitard (a protective layer of low permeable materials). Generally, the faster water is able to flow through the ground to an aquifer, the more vulnerable the area is to contamination. For example, a fuel spill would get into an aquifer much more quickly where a HVA has been identified than where one has not.

Once the Vulnerable Areas have been delineated, their vulnerability is determined. Not all Vulnerable Areas are equally vulnerable, so numeric scores are attached to denote the Intrinsic Vulnerability in each case. Following this, the Threats to the drinking water system in those areas must be identified. The identification of potential Threats occurs through two processes – Threats Assessment and Issues Evaluation. Threats Assessment requires identification of *Activities* and *Conditions* which are a potential threat to water. In the context of Source Water Protection, these terms have very specific meanings. *Activities* are existing land uses in a Vulnerable Area that may be a significant risk to the water supply (i.e. an underground fuel storage tank, or the spreading of pesticides), whereas *Conditions* are defined as contamination from past activities that may be a significant risk (i.e. Brownfield site). An *Issue* is essentially an existing contamination of the raw water supply. If an Issue is found in a system, the Threats (Activities and Conditions) causing the Issue must be identified. For example, if TCE (trichloroethylene) is found to have contaminated a well, then its source (whether it be an activity or condition) must be identified.

Identifying the location of potential Threats relies on field surveys and existing databases of land use activities. According to the Technical Rules, determining whether the activity is a significant risk occurs by multiplying the Intrinsic Vulnerability of an area by the level of Threat (this is determined by relating the type of Activity and specific circumstances to a series of tables provided by the Ministry of the Environment (MOE 2008b)) For example, within 100 meters of a wellhead the Intrinsic Score is 10. A private septic system scores a 10 according to the MOE tables. Therefore a septic system in this 100m zone will score a 100 (10x10). Anything scoring over 80 is considered a Significant Threat so in this instance the Activity (septic) is a Significant Threat.

1.2.3 The Third and Fourth Stages

Following completion of the Assessment Report, the third stage of the process requires the preparation of a Source Protection Plan for each Source Protection Area. Locally, the Source Protection Plans are scheduled for completion in the fall of 2012. Source Protection Plans are intended primarily to prevent new risks to drinking water from being established and to reduce those risks already on the landscape to an accessible level. These plans may take up to two years following the approval of the Assessment Reports. In the SGBLS region, a planning work group was established in July 2009 to provide policy expertise and advice to the Source Protection Committee (SPC) during preparation of the Source Protection Plan.

The final (fourth) stage of the process is implementation of the Source Protection Plan. This implementation will likely be primarily through municipal official plans, but the province and others are also subject to the plans. Implementation will also be subject to monitoring and reporting and will involve inspections and enforcement. Following approval and implementation of the plan, an iterative process of continuous improvement, review and updating will be ongoing.

1.3 THE SOUTH GEORGIAN BAY-LAKE SIMCOE SOURCE PROTECTION REGION

The South Georgian Bay-Lake Simcoe Source Protection Region is one of 19 Source Protection Regions across Ontario, established in accordance with the O'Connor recommendation to follow watershed boundaries (Figure 1-1; figures are located at the end of the chapter). The South Georgian Bay-Lake Simcoe (SGBLS) Source Protection Region (SPR) is comprised of three Source Protection Areas: the Nottawasaga Valley Source Protection Area, the Severn Sound Source Protection Area, and the Lakes Simcoe and Couchiching-Black River Source Protection Area (Figure 1-2). It should be noted that the Lakes Simcoe and Couchiching-Black River SPA is comprised of two watersheds (the Lake Simcoe watershed and the Black-Severn River watershed).

The SGBLS SPR spans over 10,000 km², from the Oak Ridges Moraine in the south to the Canadian Shield in the north. The region contains portions of the Niagara Escarpment, Oak Ridges Moraine, Oro Moraine, Peterborough Drumlin Fields, Simcoe Uplands and Lowlands and the Canadian Shield. The region includes fifty-two municipalities and three First Nations communities with over 108 drinking water systems (110 including First Nations), 277 municipal wells, 16 municipal surface water intakes, and more than 50,000 private wells. The region is very complex and diverse in its geology, physiography, population, and development pressures, with a multiplicity of existing water uses including drinking water supply, recreation, irrigation, agriculture, commercial and industrial uses, as well as ecosystem needs.

Four Source Protection Regions share a border with the SGBLS Region, these being the TCC (Trent Conservation Coalition), CTC (Credit Valley, Toronto and Region, and Central Lake Ontario), Lake Erie, and the Saugeen, Grey Sauble, Northern Bruce Peninsula Source Protection Regions (Figure 1-1). As drinking water systems and

associated Vulnerable Areas may span Source Protection Region boundaries, the Terms of Reference listed all those matters in one Region that may affect another. This process sets the stage for collaboration between Source Protection staff and committees, ensuring where cross-boundary situations occur, the required information is included in the Assessment Reports and Source Protection Plans.

1.4 PARTICIPANTS IN THE PROCESS

The process of completing each Assessment Report has been complex, requiring involvement and commitment from a diverse number of individuals and various oversight committees including the Source Protection Committee, municipalities, Provincial Ministries, consulting companies, and Source Protection Authorities. Here we outline some of the main participants in the process.

1.4.1 Source Protection Authorities (SPA)

In accordance with the *Clean Water Act*, Conservation Authority Boards of Directors serve as the SPA where they exist. Where Conservation Authorities do not exist (as in the case of the Black-Severn River and Severn Sound watersheds), an existing watershed agency, the municipality, or a newly formed group serves as the SPA. In the SGBLS SPR, the Nottawasaga Valley SPA is the Nottawasaga Valley Conservation Authority and the Severn Sound SPA is represented by the Severn Sound Environmental Association. For the Lakes Simcoe and Couchiching-Black River SPA, representation is a combination of the Lake Simcoe Region Conservation Authority and municipal representatives from the Black-Severn River watershed.

Source Protection Authorities are responsible for a range of tasks including: establishing the SPC, providing the SPC-approved Terms of References, Assessment Report and Source Protection Plan to the Province, and overseeing operational aspects such as budgeting, staffing and reporting requirements. As the lead agency, the Lake Simcoe Region Conservation Authority manages the administrative and financial aspects of the program and oversees the work of the Source Water Protection (SWP) project team with input from the other SPAs.

1.4.2 Source Protection Committee (SPC)

As required by the CWA, a Source Protection Committee (SPC) for the South Georgian Bay-Lake Simcoe Source Protection Region was established in December 2007. The primary purpose of the SPC is to ensure an open process is followed in the development of reasonable, science based policies that protect municipal sources of drinking water now and into the future. The Committee will develop Source Protection Plans that include policies and strategies to protect our drinking water by preventing, reducing or eliminating significant threats to those water resources. In the development of the Source Protection Plans, the Committee will:

- Ensure that public concerns are heard and taken into consideration;
- Consult with impacted landowners;
- Establish policies based on the best available science and be mindful of the precautionary principle;
- Consider all economic impacts; and
- Make decisions that are fair and reasonable through an open and transparent process.

Ultimately the SPC is responsible for overseeing the development of the three key pieces of documentation outlined above (the Terms of References, Assessment Reports and Source Protection Plans).

The SPC members represent a wide range of interests including municipal, economic, First Nations and the general public. Local SPC members and their represented interests are listed in Table 1-2.

Table 1-2: Members of the SGBLS Source Protection Committee.

| Representation | Name | Interest |
|----------------|-----------------|------------------------------------|
| Chair | Lynn Dollin | Councilor, Town of Innisfil |
| Municipal (7) | John Boucher | Severn Sound watershed |
| | Clayton Cameron | Black Severn River watershed |
| | Herb Proudley | Severn Sound watershed |
| | Rick Newlove | Nottawasaga Valley watershed |
| | Stan Wells | Nottawasaga Valley watershed |
| | David Marquis | Lake Simcoe watershed |
| | Erin Mahoney | Lake Simcoe watershed |
| Economic (7) | Colin Elliott | Agriculture |
| | Chris Galway | Aggregate producers |
| | John Hemsted | Agriculture |
| | Colin Nisbet | Golf industry |
| | Dave Ritchie | Agriculture |
| | Gerry Brouwer | Industrial / commercial sector |
| | David Ketcheson | Industrial / commercial sector |
| Public (7) | Dianne Corrigan | Town of Newmarket, Public at large |
| | Bob Duncanson | Dufferin County, Public at large |
| | Stephanie Hobbs | Town of Midland, Environment |
| | Tom Kurtz | Horseshoe Valley, Public at large |
| | Alex Millar | City of Orillia, Public at large |
| | Fred Ruf | Victoria Harbor, Health |
| | Larry Slomka | Town of Innisfil, Health |
| First Nations | Fred Jahn | Chippewas of Rama First Nation |

Committee members also participate in working groups established to address specific aspects of the process. These working groups make recommendations to the SPC regarding the Assessment Report and Source Protection Plan development. Critical to the completion of the Assessment Report was the Technical Work Group. The Technical Work Group reviewed all of the technical studies undertaken for the Assessment Report. Information was only included in the Assessment Report if all their concerns (if any) had been addressed and subsequently endorsed by the entire SPC. Committee members also raised items that did not fall within the Assessment Report framework – see Chapter 11 for more details.

1.4.3 Municipalities

There are fifty-two municipalities within the SGBLS Source Protection Region including upper tier, lower tier and single tier municipalities. All municipalities and their Source Protection Areas are presented in Table 1-3. Municipal involvement in the preparation of the Assessment Report has occurred in many capacities including membership on the SPC and SPA. While all municipalities have played an important role in development of the Assessment Report, many were task leads for the technical studies undertaken for drinking water systems in their municipality. Municipalities also played a critical role in reviewing technical studies and in the confirmation of any Significant Threats to a drinking water system. Municipality involvement in SWP will continue to increase in the coming years as the Source Water Protection Plans are developed and implemented.

The municipal Task Leads within the Lakes Simcoe and Couchiching-Black River Source Protection Area are:

- The City of Kawartha Lakes (i.e. groundwater supplies);
- The City of Barrie;
- The Regional Municipality of Durham (i.e. groundwater supplies); and
- The Regional Municipality of York (i.e. groundwater supplies)

Table 1-3: Municipalities within the South Georgina Bay-Lake Simcoe Source Protection Region, and the Source Protection Areas they are within. Highlighted column indicates those municipalities within this Assessment Report.

| Municipality | Source Water Protection Area | | | |
|-----------------------------------|---|-------------------------|-------------|--------------|
| | Lake Simcoe and Couchiching-Black River | | Nottawasaga | Severn Sound |
| | Lake Simcoe | Couchiching-Black River | | |
| Dufferin (County of) | | | • | |
| Durham (Regional Municipality of) | • | | | |
| Grey (County of) | | | • | |
| Haliburton (County of) | | • | | |
| Muskoka (District of) | | • | | • |

| Municipality | Source Water Protection Area | | | |
|-------------------------------------|---|-------------------------|-------------|--------------|
| | Lake Simcoe and Couchiching-Black River | | Nottawasaga | Severn Sound |
| | Lake Simcoe | Couchiching-Black River | | |
| Peel (Regional Municipality of) | • | | • | |
| Simcoe (County of) | • | • | • | • |
| York (Regional Municipality of) | • | | • | |
| Adjala-Tosorontio (Township of) | | | • | |
| Algonquin Highlands (Township of) | | • | | |
| Amaranth (Township of) | | | • | |
| Aurora (Town of) | • | | | |
| Barrie (City of) | • | | • | |
| Blue Mountains (Town of) | | | • | |
| Bracebridge (Town of) | | • | | |
| Bradford West Gwillimbury (Town of) | • | | • | |
| Brock (Township of) | • | | | |
| Caledon (Town of) | • | | • | |
| Clearview (Township of) | | | • | |
| Collingwood (Town of) | | | • | |
| Dysart et Al (Municipality of) | | • | | |
| East Gwillimbury (Town of) | • | | | |
| Essa (Township of) | | | • | |
| Georgian Bay (Township of) | | • | | • |
| Georgina (Town of) | • | | | |
| Gravenhurst (Town of) | | • | | |
| Grey Highlands (Municipality of) | | | • | |
| Innisfil (Town of) | • | | • | |
| Kawartha Lakes (City of) | • | • | | |
| King (Township of) | • | | • | |
| Lake of Bays (Township of) | | • | | |
| Melancthon (Township of) | | | • | |
| Midland (Town of) | | | | • |
| Minden Hills (Township of) | | • | | |
| Mono (Township of) | | | • | |
| Mulmur (Township of) | | | • | |
| Muskoka Lakes (Township of) | | • | | |
| New Tecumseth (Township of) | • | | • | |
| Newmarket (Town of) | • | | | |
| Orillia (City of) | • | • | | • |
| Oro-Medonte (Township of) | • | | • | • |
| Penetanguishene (Town of) | | | | • |
| Ramara (Township of) | • | • | | |
| Scugog (Township of) | • | | | |
| Severn (Township of) | | • | | • |
| Shelburne Township (Town of) | | | • | |
| Springwater (Township of) | • | | • | • |
| Tay (Township of) | | | | • |

| Municipality | Source Water Protection Area | | | |
|----------------------------------|---|-------------------------|-------------|--------------|
| | Lake Simcoe and Couchiching-Black River | | Nottawasaga | Severn Sound |
| | Lake Simcoe | Couchiching-Black River | | |
| Tiny (Township of) | | | | • |
| Uxbridge (Township of) | • | | | |
| Wasaga Beach (Town of) | | | • | |
| Whitchurch-Stouffville (Town of) | • | | | |

1.4.4 First Nations

There are three First Nation Communities in the SGBLS region: the Chippewas of Georgina Island, the Chippewas of Christian Island and the Chippewas of Rama First Nation. Participation in the program is voluntary for First Nation communities, and the Chippewas of Rama First Nation have chosen to send a representative to the SPC and undertake some technical investigations.

1.4.5 Consultants

Technical studies undertaken to complete this report were largely completed by consulting firms. Use of consultants was necessary considering the large number of individual studies that needed to be undertaken and the different skill sets required (e.g. hydrologist, hydrogeologists, modelers, GIS technicians etc). Consulting firms were either contracted by the Source Protection Authorities or by member municipalities who took responsibility for projects conducted in their jurisdiction. The following consulting firms prepared information for the SGBLS Assessment Reports:

- Genivar (formerly Jagger Hims Limited)
- Golder Associates Ltd.
- W.F Baird & Associates Coastal Engineers Ltd.
- R.J. Burnside and Associates Limited
- Jacques Whitford Stantec Limited
- Aecom
- Earthfx Incorporated
- SNC-Lavalin Inc.
- Dillon Consulting Limited
- Azimuth Environmental Consulting Inc.
- AquaResource Inc.
- J.D. Barnes Limited

- Acres International Limited
- Clarifica Inc.
- Gerber Geosciences Inc.

1.4.6 Peer Reviewers

All technical studies completed for the Assessment Report were reviewed to help ensure the data, methods and assumptions applied were of sufficient standard for the Source Water Protection process. In addition, these reviews were undertaken to facilitate consistency between the technical studies and to ensure the content and methods complied with the Technical Rules (MOE, 2008a). Varying levels of review were provided by municipal representatives, MNR and MOE representatives, consultants, members of the Source Protection Committee, SWP and SPA staff, and Conservation Ontario staff. These reviewers had a broad range of knowledge bases and include, but are not restricted to, the following professionals: hydrologists, modelers, hydrogeologists, environmental scientists, civil engineers and public health officials. While the water budget exercise required a third party peer review exercise, the remaining technical studies were subjected to varying levels of scrutiny. All technical studies, however, were reviewed by SWP technical staff. Further information about the peer reviews is provided throughout the Assessment Reports, with peer review comments provided in the Appendices.

1.4.7 Public

The public has participated in the Source Protection Process by providing Source Protection Committee and Staff members updated information about what types of activities are occurring on their properties. The information gathered from the Assessment Report Open Houses hosted by the South Georgian Bay-Lake Simcoe Source Protection Committee as well as calls and e-mails to the South Georgian Bay-Lake Simcoe Source Protection Staff has been used to update this report.

1.5 PURPOSE AND SCOPE OF THIS REPORT

The Assessment Reports will be the basis for the next stage of the Source Protection process – developing Source Protection Plans and making local policy decisions for protecting the quality and quantity of drinking water. Although the primary purposes of the Assessment Report is to provide the SPC with the information needed to develop Source Protection Plans, it is recognized that the information it contains is of use and interest to a much broader audience including the general public and municipalities. This is especially true in relation to identifying land uses and activities that are potential Significant Threats to drinking water quality and quantity.

The content and scope of the Assessment Report is dictated by the *Clean Water Act* and associated regulations which specify the minimum information that must be included. To facilitate preparation of the Assessment Report, a set of Technical Rules (MOE, 2008a) were provided by the Province that specifies what information must be included and how certain information must be determined. Generally speaking, the Technical Rules require the following information to be included in each Assessment Report:

- Characterization of the Source Water Protection Area watershed: This includes descriptions of the natural and human geography;
- A Conceptual water budget for the entire SWP area and a Tier 1 water budget for each subwatershed: Those systems identified as having water quantity stress in the Tier 1 water budget, progress to a more detailed Tier 2 water budget and Tier 3 if needed;
- Broad scale assessment of Regional Groundwater Vulnerability: This aspect of the Assessment Report requires that both Highly Vulnerable Aquifers (HVA) and Significant Groundwater Recharge Areas (SGRAs) be identified; and
- Drinking water system assessment: For each drinking water system within the Terms of Reference, the Vulnerability of the supply wells or surface water intakes is assessed and any potentially Significant Threats to the water quality are identified.

The *Clean Water Act* requires the inclusion of Municipal Residential Drinking Water Systems in the Source Protection Planning process. The *Clean Water Act* also allows for a variety of systems that are not Municipal Residential Systems to be included either by the choice of the Municipal or First Nations councils. Systems can be excluded from the process if they are due to be decommissioned within a reasonable time frame. In the SGBLS region, and as described in the Terms of Reference for each Source Protection Area, there are a total of 108 drinking water systems that have been assessed, including 277 supply wells and 16 surface water intakes. These systems supply water to approximately 75% of the population in the Region. As highlighted in Table 1-4, within the Couchiching-Black River Source Protection Area there are 10 municipal supply wells included in the ToR, 6 surface intakes providing water for 10 drinking water systems. As there are many drinking water systems in the Region, the majority of each Assessment Report is dedicated to reporting the Vulnerability and Threats of the drinking water systems.

Table 1-4: Number of Drinking Water Systems, Wells and Surface Water Intakes in the SGBLS Region.

| Source Protection Area | | Number of drinking water Systems | Number of Municipal Supply Wells | Number of Municipal Surface Water Intakes |
|--|--------------|----------------------------------|----------------------------------|---|
| Lake Simcoe and Lake Couchiching – Black River | Lake Simcoe | 31 | 77 | 7 |
| | Black-Severn | 10 | 10 | 6 |
| Nottawasaga | | 34 | 103 | 1 |
| Severn Sound | | 35 | 87 | 2 |
| Total | | 110* (108) | 277** | 16 |

*Systems in Barrie and Orillia counted twice in the Total as the drinking water systems are in two Source Protection Areas.

** Number of wells in each SPA location, some wells are servicing communities in other SPAs.

1.6 HOW THIS REPORT IS ORGANIZED

This report represents one Assessment Report out of three required for the SGBLS Region. The Three Assessment Reports required are:

- 1) Lakes Simcoe and Couchiching–Black River Source Protection Area Assessment Report (This report);
- 2) Nottawasaga Source Protection Area Assessment Report; and
- 3) Severn Sound Source Protection Area Assessment Report

As the Source Protection Area covered by this Assessment Report includes two separate and very different watersheds - Lake Simcoe and Black Severn River – the report has been separated into two parts, each part representing one of the two watersheds.

Lakes Simcoe and Couchiching–Black River Source Protection Area Assessment Report:

Part 1: Lake Simcoe Watershed

Part 2: Black Severn River Watershed (Couchiching-Black River)

This report has been organized to maximize usability to the reader. Broadly speaking, information in this report falls into one of two categories: 1) Information related to the entire Source Protection Area; and 2) Information related to Vulnerability, Threats and Issues of municipal drinking water systems. A flow chart that summarizes the main topics, chapters and related municipalities is presented in Figure 1-3.

Chapters 2-4 provide information related to the entire Source Protection Area and include watershed characterization (chapter 2), water budget (chapter 3), and regional scale Vulnerable Areas - Highly Vulnerable Aquifers (HVAs) and Significant Groundwater Recharge Areas (SGRAs) - (chapter 4).

The water budget chapter is further divided into 4 sections, these being: Conceptual water budget, Tier 1, Tier 2 and Tier 3 water budgets. Conceptual and Tier 1 water budgets are completed for each subwatershed in the area, whereas Tier 2 water budgets are only required for those watersheds that have been identified as being stressed in the Tier 1 water budgets. Tier 3 water budgets are required for each drinking water system within a subwatershed which has been found to have a significant or moderate stress as a result of the Tier 2 water budget. Tier 3 water budgets have not yet been completed and will therefore be incorporated into future updated Assessment Reports.

Chapter 5 provides an overview of the methods and technical rules related to assessing Vulnerability and Threats of drinking waters systems. It is intended to be an introduction to the more detailed information in the following chapters and provides a summary of the Technical Rules requirements.

The next 5 chapters in the report are dedicated to a detailed assessment of the Vulnerability, Issues and Threats of specific municipal drinking water systems. For ease of use, a chapter has been dedicated to each municipality responsible for the drinking water supply. Each municipal vulnerability and threats chapter includes the same overall information, specific to each drinking water system, that being:

1. Delineation of either the Well Head Protection Area (WHPA) for supplies using groundwater, or Intake Protection Zones (IPZ) for surface water systems;
2. An assessment of WHPA or IPZ vulnerability to Drinking Water Threats;
3. An evaluation of any Drinking Water Issues (essentially determining if the water supply is contaminated in a manner that is, or tending to be, a risk to drinking water supply); and
4. Threats assessment, whereby; (a) areas that are or would be Significant, Moderate or Low risk are identified depending on the type of parameter and the vulnerability; and (b) Number of locations that a significant threat occurs within the vulnerable areas is enumerated. In accordance with the Technical Rules each chapter contains a written description of how the work was undertaken, including data and information sources, methods and limitations.

The final chapter aims to put the findings of the report into context of other issues such as climate change and the Great Lakes Agreement. This chapter also includes items SPC members raised that did not fall within the Assessment Report framework.

In addition to the main Assessment Report, there are also numerous appendices. The appendices contain memorandums, reports, tables and figures that support information contained within the Assessment Reports. The preamble to this report highlights all the appendices provided.

1.7 INFORMATION GAPS AND CONTINUOUS IMPROVEMENT

The content of this Assessment Report is based on the best available information and has been prepared to meet all the requirements of the *Clean Water Act* and Technical Rules (MOE, 2008a). There are cases, however, where required information is either not provided (a gap) or the information provided is not based on the most recent data. These situations have arisen either because the information arrived too late in the reports' preparation process, or the information was not available (i.e., it either does not exist or is still being completed). In these situations the report provides an explanation as to why the problem exists, and at what point after submission of the Assessment Report new or updated information will be incorporated.

The *Clean Water Act* includes provision for updating the Assessment Reports:

If, after the Director approves an assessment report and before a proposed source protection plan is submitted to the source protection authority under subsection 22 (16), the source protection committee becomes aware that the assessment report is no longer accurate or complete, the source protection committee shall submit an updated assessment report to the source protection authority. (2006, c. 22, s. 19 (1)).

In accordance with the Act, the SGBLS SPC will continue to fill gaps, incorporate new data and refine the assessment report technical work after the required submission date, but before the proposed Source Protection Plans have been submitted. Opportunities for input and review of amended Assessment Reports will be made available to those affected by the proposed changes.

**Source Water Protection
Areas and Regions**

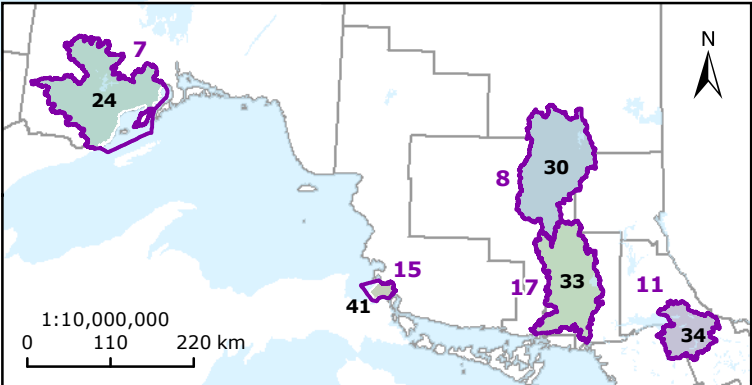
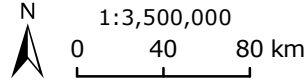
Source Water Protection Regions

- 1 Ausable Bayfield Maitland Valley
- 2 Cataraqui
- 3 CTC
- 4 Essex
- 5 Halton - Hamilton
- 6 Lake Erie
- 7 Lakehead
- 8 Mattagami
- 9 Mississippi - Rideau
- 10 Niagara Peninsula
- 11 North Bay - Mattawa
- 12 Quinte
- 13 Raisin Region South Nation
- 14 Saugeen, Grey Sauble,
Northern Bruce Peninsula
- 15 Sault Ste Marie
- 16 South Georgian Bay Lake Simcoe
- 17 Sudbury
- 18 Thames, Sydenham and Region
- 19 Trent Conservation Coalition

Source Water Protection Areas

- 10 Ausable Bayfield
- 11 Cataraqui
- 12 Catfish Creek
- 13 Central Lake Ontario
- 14 Conservation Halton
- 15 Credit Valley
- 16 Crowe Valley
- 17 Essex
- 18 Ganaraska
- 19 Grand River
- 20 Grey Sauble
- 21 Hamilton
- 22 Kawartha
- 23 Kettle Creek
- 24 Lakehead
- 25 Lake Simcoe
- 26 Long Point
- 27 Lower Thames Valley
- 28 Lower Trent
- 29 Maitland Valley
- 30 Mattagami
- 31 Mississippi Valley
- 32 Niagara Peninsula
- 33 Nickel District
- 34 North Bay-Mattawa
- 35 Nottawasaga Valley
- 36 Otonabee
- 37 Quinte
- 38 Raisin
- 39 Rideau Valley
- 40 Saugeen
- 41 Sault Ste Marie
- 42 South Nation
- 43 St Clair
- 44 Toronto and Region
- 45 Upper Thames River
- 46 Severn Sound
- 48 Northern Bruce Peninsula

- Waterbody
- Municipal Boundaries

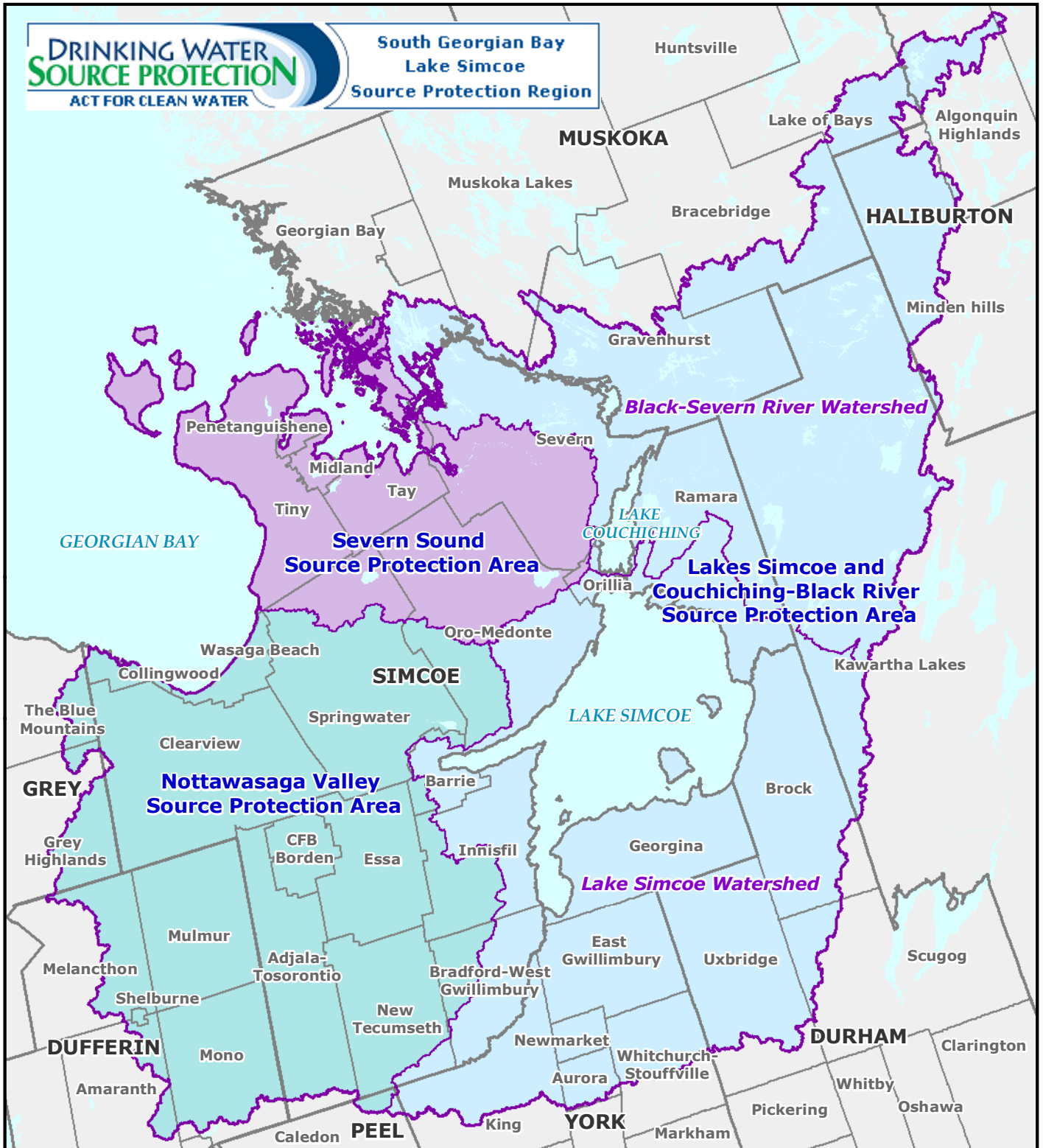


Created by: LSRCA
Date: 2010-02-24



Figure 1-1

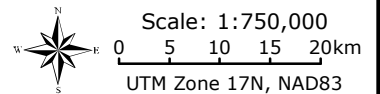
This map was produced by the Lake Simcoe Region Conservation Authority, lead agency of the South Georgian Bay Lake Simcoe Region Source Protection Region. Base data have been compiled from various sources, under data sharing agreements. While every effort has been made to accurately depict the base data, errors may exist.



- Source Water Protection Region
- Source Protection Area (SPA)
- Lakes Simcoe and Couchiching-Black River SPA
- Nottawasaga Valley SPA
- Severn Sound SPA
- Watershed Boundaries
- Upper Tier Municipality
- Lower Tiers Municipality
- Water Body

Source Water Protection Areas and Municipalities

Created by: LSRCA
 Date: 2010-01-25



This map was produced by the Lake Simcoe Region Conservation Authority, lead agency of the South Georgian Bay Lake Simcoe Region Source Protection Region. Base data have been compiled from various sources, under data sharing agreements. While every effort has been made to accurately depict the base data, errors may exist.



Figure 1-2

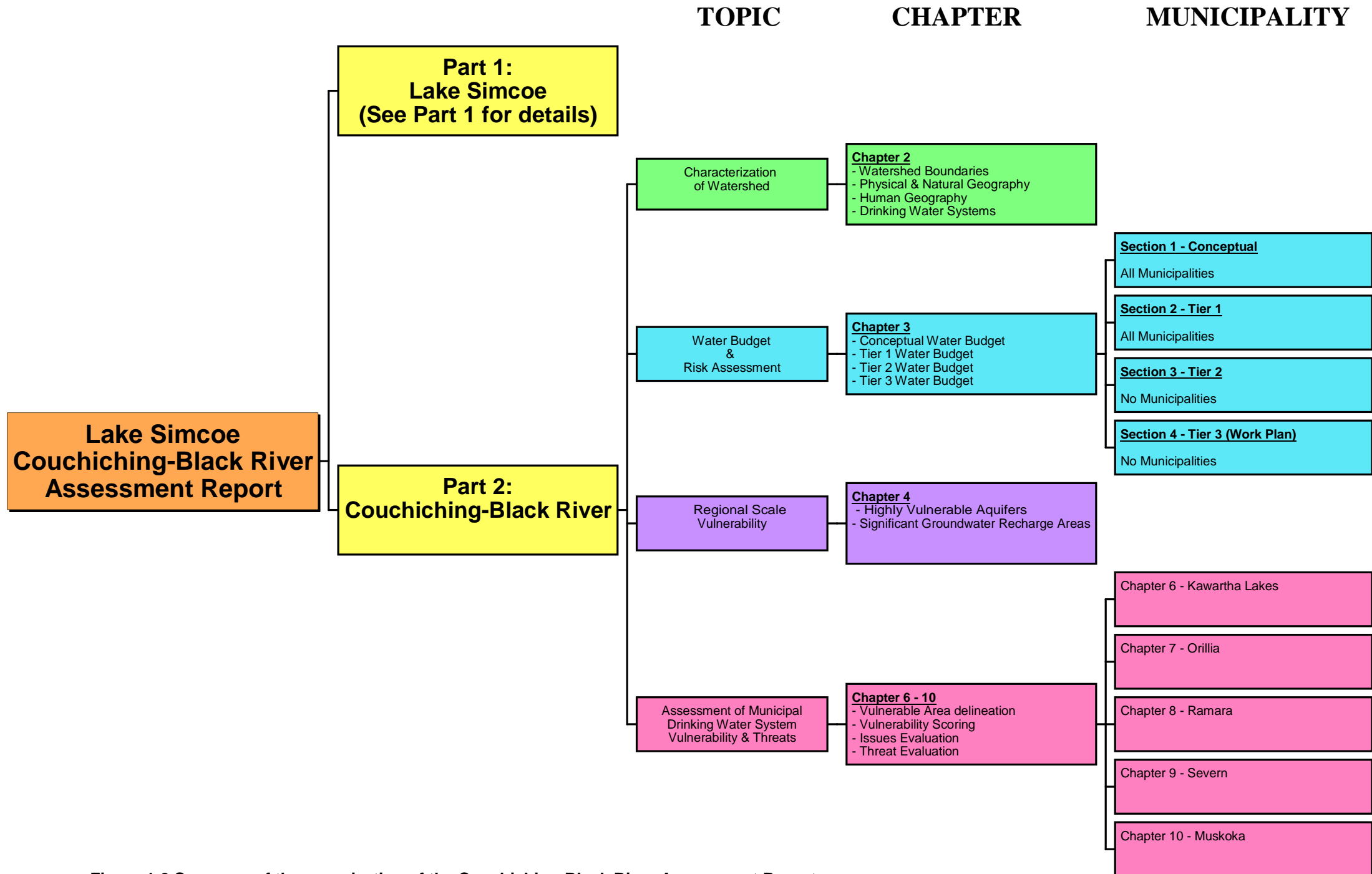


Figure 1-3 Summary of the organization of the Couchiching-Black River Assessment Report